



QuickShip

Expedited production of commonly used Williams products – ready to ship within 48 hours.



QuickShip Products

QUICKSHIP PROGRAM

- QuickShip orders must consist of QuickShip items ONLY to ship in 48 hours from time of order entry at factory.
- "QuickShip" MUST be referenced in the subject line on all requests.
- Standard freight terms apply.



LPT 2x2

LED

- **LPT-22-L43/835-SAF12095-QS-DIM-BD-UNV**
Lensed Troffer, 2' x 2', 4,300 lumens, 3500 CCT, Frosted acrylic lens, 0-10V dimming driver, Univ. Volt

FLUORESCENT

- **LPT-22-232U-SA12100-QS-EB2*AD-BD-UNV**
Lensed Troffer, 2' x 2', 2 U-Lamps, Acrylic Lens, T8 Elec. Ballast, Univ. Volt



LPT 2x4

LED

- **LPT-24-L67/835-SAF12095-QS-DIM-BD-UNV**
Lensed Troffer, 2' x 4', 6,700 lumens, 3500 CCT, frosted acrylic lens, 0-10V dimming driver, Univ. Volt

- **LPT-24-L90/835-SAF12095-QS-DIM-BD-UNV**
Lensed Troffer, 2' x 4', 9,000 lumens, 3500 CCT, frosted acrylic lens, 0-10V dimming driver, Univ. Volt

FLUORESCENT

- **LPT-24-232-SA12100-QS-EB2*AD-BD-UNV**
Lensed Troffer, 2'x4', 2-Lamp, Acrylic Lens, T8 Elec. Ballast, Univ. Volt

- **LPT-24-332-SA12100-QS-EB3*AD-BD-UNV**
Lensed Troffer, 2'x4', 3-Lamp, Acrylic Lens, T8 Elec. Ballast, Univ. Volt

- **LPT-24-332-SA12100-(3)F032/835/ECO F&I-QS-EB3*AD-BD-UNV**
Lensed Troffer, 2'x4', 3-Lamp, Acrylic Lens, Lamped, T8 Elec. Ballast, Univ. Volt

- **LPT-24-332-SA12100-QS-EB2/1*AD-BD-UNV**
Lensed Troffer, 2'x4', 3-Lamp, Acrylic Lens, (2) T8 Elec. Ballast, Univ. Volt

- **LPT-24-332-SA12100-(3)F032/835/ECO F&I-QS-EB2/1*AD-BD-UNV**
Lensed Troffer, 2'x4', 3-Lamp, Acrylic Lens, Lamped, (2) T8 Elec. Ballast, Univ. Volt

- **LPT-24-432-SA12100-QS-EB4*AD-BD-UNV**
Lensed Troffer, 2'x4', 4-Lamp, Acrylic Lens, T8 Elec. Ballast, Univ. Volt

- **LPT-24-432-SA12100-(4)F032/835/ECO F&I-QS-EB4*AD-BD-UNV**
Lensed Troffer, 2'x4', 4-Lamp, Acrylic Lens, Lamped, T8 Elec. Ballast, Univ. Volt

- **LPT-24-432-SA12100-QS-EB2/2*AD-BD-UNV**
Lensed Troffer, 2'x4', 4-Lamp, Acrylic Lens, (2) T8 Elec. Ballast, Univ. Volt

- **LPT-24-432-SA12100-(4)F032/835/ECO F&I-QS-EB2/2*AD-BD-UNV**
Lensed Troffer, 2'x4', 4-Lamp, Acrylic Lens, Lamped, (2) T8 Elec. Ballast, Univ. Volt



LT 1x4

- **LT-14-L47/835-AF-QS-DIM-BD-UNV**
LED Troffer, frosted acrylic diffuser, 1' x 4', 4,700 lumens, 3500K CCT, 0-10V dimming driver, Univ. Volt



LT 2x2

- **LT-22-L34/835-AF-QS-DIM-BD-UNV**
LED Troffer, frosted acrylic diffuser, 2' x 2', 3,400 lumens, 3500K CCT, 0-10V dimming driver, Univ. Volt



LT 2x4

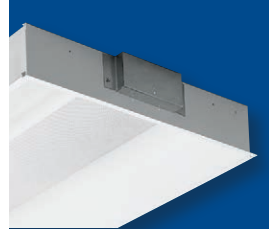
- **LT-24-L43/835-AF-QS-DIM-BD-UNV**
LED Troffer, frosted acrylic diffuser, 2' x 4', 3,400 lumens, 3500K CCT, 0-10V dimming driver, Univ. Volt

- **LT-24-L73/835-AF-QS-DIM-BD-UNV**
LED Troffer, frosted acrylic diffuser, 2' x 4', 7,300 lumens, 3500K CCT, 0-10V dimming driver, Univ. Volt



DI 2x2

- **DIG-S22-240TT-WPR-QS-EB2-UNV**
Direct/Indirect, White Perf. Round Diffuser, 2'x2', 2-Lamp, T8 Elec. Ballast, Univ. Volt



DI 2x4

- **DIG-S24-232-WPR-QS-EB2*AD-BD-UNV**
Direct/Indirect, White Perf. Round Diffuser, 2'x4', 2-Lamp, T8 Elec. Ballast, Univ. Volt

- **DIG-S24-332-WPR-QS-EB3*AD-BD-UNV**
Direct/Indirect, White Perf. Round Diffuser, 2'x4', 3-Lamp, T8 Elec. Ballast, Univ. Volt

WALL MOUNT



29

- **29-4-232-A-QS-EB2*AD-BD-UNV**
Wall Mount, Up/Down, 4', 2-Lamp, Acrylic Lens, T8 Elec. Ballast, Univ. Volt



HE3 2x4

- **HE3G-D24-332-365-L/WWC-QS-EB3*AD-BD-UNV**
Parabolic, 2'x4', 3-Lamp, 18-Cell, T8 Elec. Ballast, Univ. Volt



HE3 2x2

- **HE3G-D22-232U-335-QS-EB2*AD-BD-UNV**
Parabolic, 2'x2', 2 U-Lamps, 9-Cell, T8 Elec. Ballast, Univ. Volt

INDUSTRIALS



GL

LED

- **GL-4-L260/840-(2)VBY PACKED W/UNIT-QS-DIM-BD-UNV**
Industrial LED Hi-Bay, 4', 26,000 lumens, 4000K CCT, 0-10V dimming driver, Univ. Volt

FLUORESCENT

- **GL-4-454T5H-(4)F54/41K F&I-(2)VBY-QS-EB4*AD-BD-UNV**
Industrial, Fluor. Hi-Bay, 4', 4-Lamp, Lamped, T5 Elec. Ballast, Univ. Volt

- **GL-4-454T5H-(2)VBY-QS-EB4-BD-UNV**
Industrial, Fluor. Hi-Bay, 4', 4-Lamp, T5 Elec. Ballast, Univ. Volt

- **GL-4-654T5H-(6)F54/41K F&I-(2)VBY-QS-EB4/2*AD-BD-UNV**
Industrial, Fluor. Hi-Bay, 4', 6-Lamp, Lamped, (2) T5 Elec. Ballast, Univ. Volt

- **GL-4-654T5H-(2)VBY-QS-EB4/2-BD-UNV**
Industrial, Fluor. Hi-Bay, 4', 6-Lamp, (2) T5 Elec. Ballast, Univ. Volt

- **GL-4-632-(6)F032/841/ECO F&I-(2)VBY-QS-EBHW3/3*AD-BD-UNV**
Industrial, Fluor. Hi-Bay, 4', 6-Lamp, Lamped, (2) T8 High Wattage Elec. Ballast, Univ. Volt

- **GL-4-632-(2)VBY-QS-EBHW3/3-BD-UNV**
Industrial, Fluor. Hi-Bay, 4', 6-Lamp, (2) T8 High Wattage Elec. Ballast, Univ. Volt



HL

- **HL-4-454T5H-MD-(2)VBY-QS-EB4*AD-BD-UNV**
Industrial, Channel Hi-Bay, 4', 4-Lamp, T5 Elec. Ballast, Univ. Volt

- **HL-4-654T5H-MD-(2)VBY-QS-EB4/2*AD-BD-UNV**
Industrial, Channel Hi-Bay, 4', 6-Lamp, T5 Elec. Ballast, Univ. Volt

- **HL-4-632-MD-(2)VBY-QS-EB4/2*AD-BD-UNV**
Industrial, Channel Hi-Bay, 4', 6-Lamp, (2) T8 Elec. Ballast, Univ. Volt



75

- **75-4-132-QS-EB1*AD-BD-UNV**
Strip, 4', 1-Lamp, T8 Elec. Ballast, Univ. Volt



76

LED

- **76-4-L53/835-QS-DIM-BD-UNV**
Strip, 8', 10,600 lumens, 3500 CCT, 0-10V dimming driver, Univ. Volt

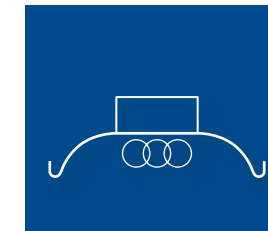
- **76-8-L106/835-QS-DIM-BD-UNV**
Strip, 4', 5,300 lumens, 3500 CCT, 0-10V dimming driver, Univ. Volt

T8

- **76-4-232-QS-EB2*AD-BD-UNV**
Strip, 4', 2-Lamp, T8 Elec. Ballast, Univ. Volt

- **76-8-259-QS-EB2*AD-BD-UNV**
Strip, 8', 2-Lamp, T8 Elec. Ballast, Univ. Volt

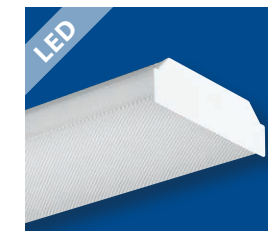
- **76-8-432-QS-EB4*AD-BD-UNV**
Strip, 8', 4-Lamp, T8 Elec. Ballast, Univ. Volt



R1240 REFLECTOR

- **R1240-4 REFLECTOR**
Symmetric Reflector for Strips

WRAP AROUND



17

LED

- **17-4-L55/835-A-QS-DIM-BD-UNV**
Narrow Wrap Around, 4', 5,500 lumens, 3500 CCT, acrylic lens, 0-10V dimming driver, univ. volt

FLUORESCENT

- **17-4-232-A-QS-EB2*AD-BD-UNV**
Narrow Wrap Around, 4', 2-Lamp, Acrylic Lens, T8 Elec. Ballast, Univ. Volt



18

LED

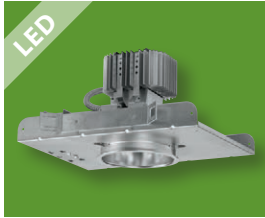
- **18-4-L90/835-A-QS-DIM-BD-UNV**
Wrap Around, 4', 9,000 lumens, 3500 CCT, acrylic lens, 0-10V dimming driver, univ. volt

FLUORESCENT

- **18-4-432-A-QS-EB4*AD-BD-UNV**
Wrap Around, 4', 4-Lamp, Acrylic Lens, T8 Elec. Ballast, Univ. Volt

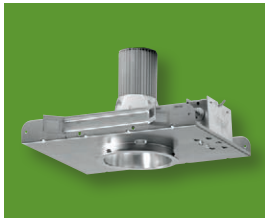
QuickShip Products

DOWNLIGHTING



LED60

- **LED60-OS11/835-CS-QS-EDD*OS-120**
Recessed LED Downlight, 6" Round, 1100 Lumen, Clear Semi-specular Reflector, 0-10V Dimming, 120-Volt
- **LED60-OS11/835-CS-QS-EDD*OS-277**
Recessed LED Downlight, 6" Round, 1100 Lumen, Clear Semi-specular Reflector, 0-10V Dimming, 277-Volt
- **LED60-OS20/835-CS-QS-EDD*OS-120**
Recessed LED Downlight, 6" Round, 2000 Lumen, Clear Semi-specular Reflector, 0-10V Dimming, 120-Volt
- **LED60-OS20/835-CS-QS-EDD*OS-277**
Recessed LED Downlight, 6" Round, 2000 Lumen, Clear Semi-specular Reflector, 0-10V Dimming, 277-Volt



PV60

- **PV60-1-26/32/42T-CS-QS-EB1-UNV**
Recessed Fluorescent Vertical Downlight, 6" Round, Clear Semi-specular Reflector, (1)26/32/42T, Elec. Ballast, Univ. Volt
- **PV60-1-26/32/42T-EB-CS-EM94CGU/1-QS-EB1-UNV**
Recessed Fluorescent Vertical Downlight, 6" Round, Clear Semi-specular Reflector, EM-(1)26/32/42T, Elec. Ballast, Univ. Volt



PH60

- **PH60-226Q-CS-QS-EB2-UNV**
Recessed Fluorescent Horizontal Downlight, 6" Round, Clear Semi-specular Reflector, (2)26Q Elec. Ballast, Univ. Volt
- **PH60-226Q-CS-EM94CGU/1-QS-EB2-UNV**
Recessed Fluorescent Horizontal Downlight, 6" Round, Clear Semi-specular Reflector, EM-(2)26Q Elec. Ballast, Univ. Volt



PV75

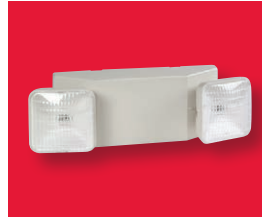
- **PV75-1-26/32/42T-CS-QS-EB1-UNV**
Recessed Fluorescent Vertical Downlight, 7.5" Round, Clear Semi-specular Reflector, (1)26/32/42T Elec. Ballast, Univ. Volt
- **PV75-1-26/32/42T-CS-EM94CGU/1-QS-EB1-UNV**
Recessed Fluorescent Vertical Downlight, 7.5" Round, Clear Semi-specular Reflector, EM-(1)26/32/42T Elec. Ballast, Univ. Volt



PH75

- **PH75-226Q-CS-QS-EB2-UNV**
Recessed Fluorescent Horizontal Downlight, 7.5" Round, Clear Semi-specular Reflector, (2)26Q Elec. Ballast, Univ. Volt
- **PH75-226Q-CS-EM94CGU/1-QS-EB2-UNV**
Recessed Fluorescent Horizontal Downlight, 7.5" Round, Clear Semi-specular Reflector, EM-(2)26Q Elec. Ballast, Univ. Volt

EMERGENCY & EXIT



EMER

- **EMER-WHT-QS-D**
Emergency Lighting Unit, Industry-standard White, Dual Voltage



EXIT (GREEN)

- **EXIT-G-AC-WHT-QS-D**
LED Exit Sign, Green, AC Dual Voltage, Industry-standard White
- **EXIT-G-EM-WHT-QS-D**
LED Exit Sign, Green, EM Dual Voltage, Industry-standard White



EXIT (RED)

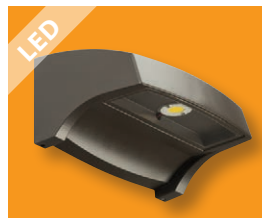
- **EXIT-R-AC-WHT-QS-D**
LED Exit Sign, Red, AC Dual Voltage, Industry-standard White
- **EXIT-R-EM-WHT-QS-D**
LED Exit Sign, Red, EM Dual Voltage, Industry-standard White



EXIT/EM

- **EXIT/EM-SF-R-WHT-QS-D**
Combo LED Exit/Emergency Unit, Single Face, Red, Industry-standard White, Dual Voltage

OUTDOOR



VWMH

- **VWMH-LED10/840-DBZ-QS-EDD*IN-UNV**
Voltaire Architectural Mini Wall Pack, 1,000 lumen, 4,000K CCT, Dark bronze, 0-10V dimming driver, Universal volt
- **VWMH-LED17/840-DBZ-QS-EDD*IN-UNV**
Voltaire Architectural Mini Wall Pack, 1,700 lumen, 4,000K CCT, Dark bronze, 0-10V dimming driver, Universal volt



VWMV

- **VWMH-LED10/840-DBZ-QS-EDD*IN-UNV**
Voltaire Architectural Mini Wall Pack, 1,000 lumen, 4,000K CCT, Dark bronze, 0-10V dimming driver, Universal volt
- **VWMH-LED17/840-DBZ-QS-EDD*IN-UNV**
Voltaire Architectural Mini Wall Pack, 1,700 lumen, 4,000K CCT, Dark bronze, 0-10V dimming driver, Universal volt